



**KINSMEN
HOMES**
Built on Family Values

The Celeste

*1816 sq. ft.
3 bedroom, 2 bath*



FRONT ELEVATION

Elevation Option A



FRONT ELEVATION W/ OPT. STONE



FRONT ELEVATION W/ OPT. 3 CAR



FRONT ELEVATION W/ OPT. 2 1/2 CAR



FRONT ELEVATION

Elevation Option B



FRONT ELEVATION W/ OPT. STONE



FRONT ELEVATION W/ OPT. 3 CAR

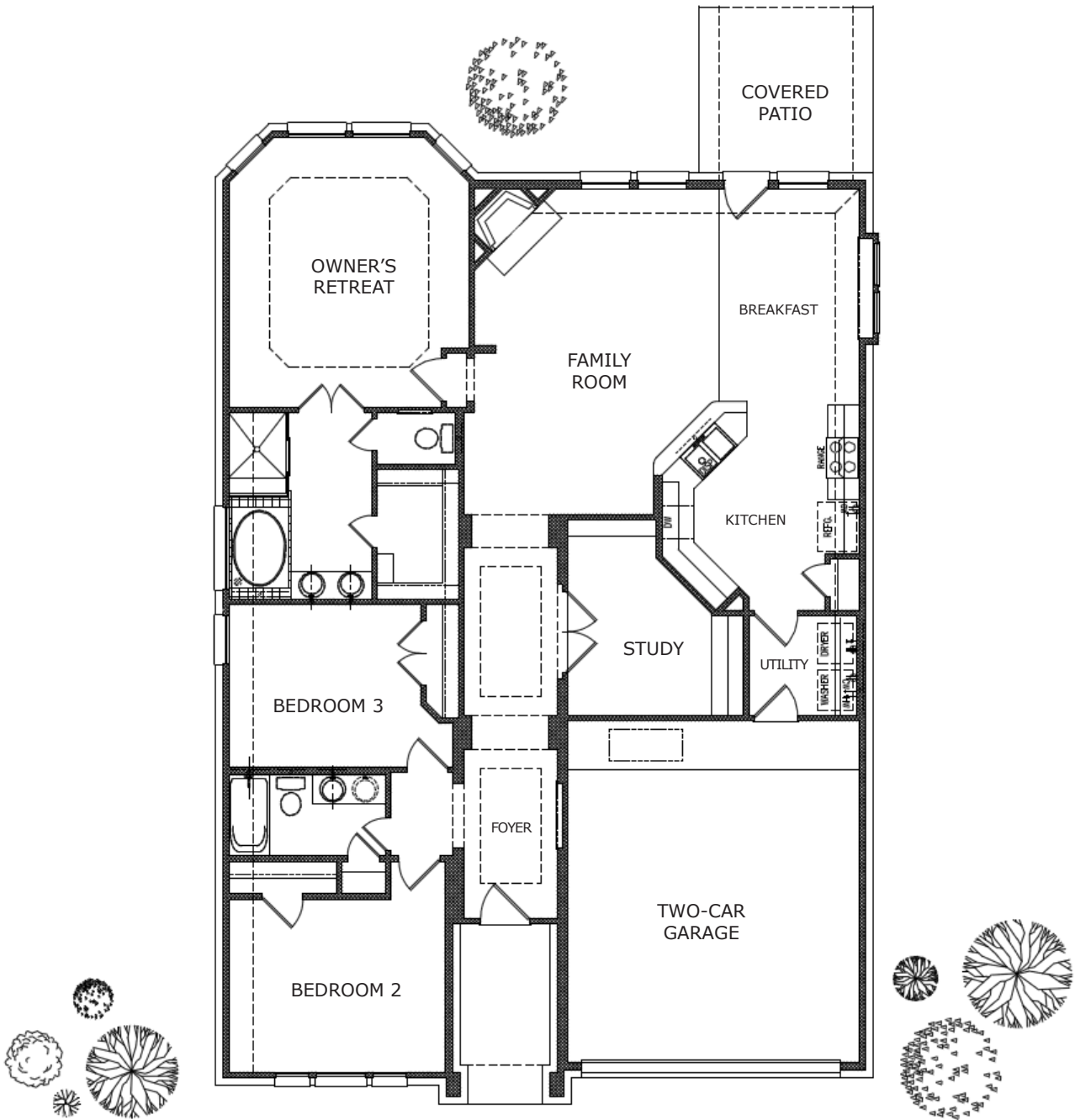


FRONT ELEVATION W/ OPT. 2 1/2 CAR

Prices, plans, dimensions, features, specification, materials and availability of homes or communities are subject to change without notice or obligation. Illustrations are artist depictions only and may differ from completed improvements. Not all options available in all communities. All Rights Reserved.

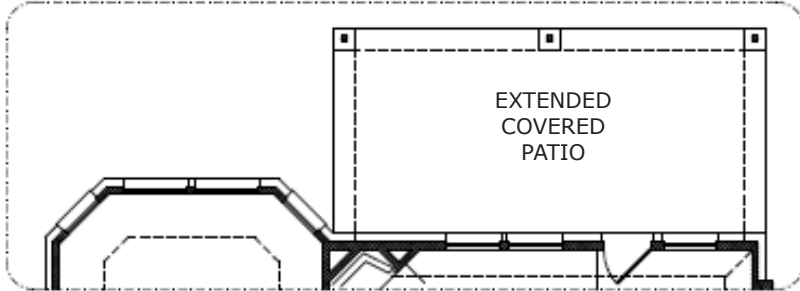
KinsmenHomes.com
888.880.8732 (o) • 800.656.1170 (f)
8554 Katy Freeway Suite 309 • Houston, TX • 77024

The Celeste

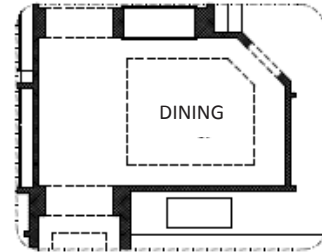


Prices, plans, dimensions, features, specification, materials and availability of homes or communities are subject to change without notice or obligation. Illustrations are artist depictions only and may differ from completed improvements. Not all options available in all communities. All Rights Reserved.

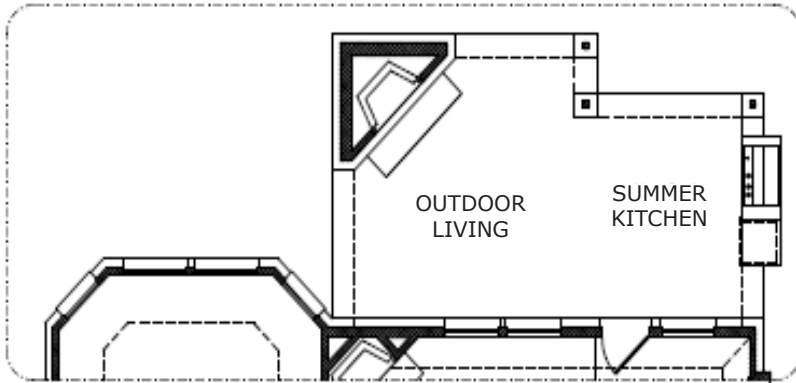
The Celeste



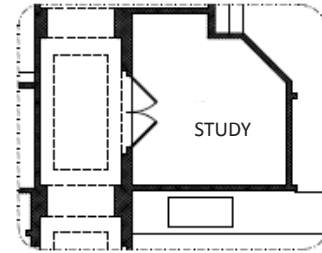
OPTIONAL EXTENDED COVERED PATIO



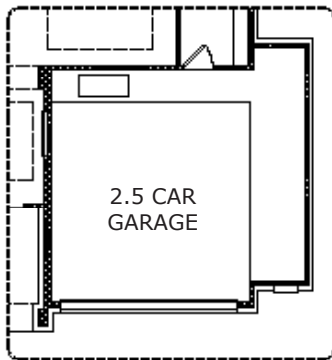
OPTIONAL DINING



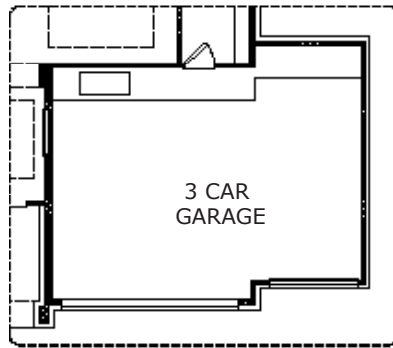
OPTIONAL EXTENDED COVERED PATIO



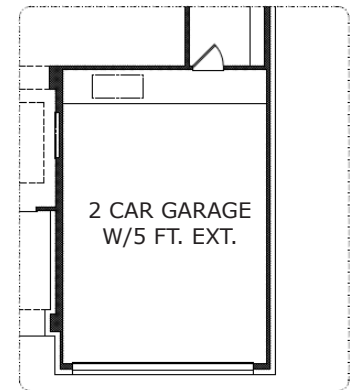
OPTIONAL STUDY



OPTIONAL GARAGE
2.5 CAR



OPTIONAL GARAGE
3 CAR



OPTIONAL GARAGE
5-FT EXTENSION