



**KINSMEN  
HOMES**  
*Built on Family Values*

# The Rene

*1960 sq. ft.  
3 bedroom, 2 bath*

## *Elevation Option A*



FRONT ELEVATION "A"



FRONT ELEVATION "A" w/ 2 1/2 CAR



FRONT ELEVATION "A" w/ OPT STONE



FRONT ELEVATION "A" w/ OPT 3 CAR



FRONT ELEVATION "B"



FRONT ELEVATION "B" w/ 2 1/2 CAR

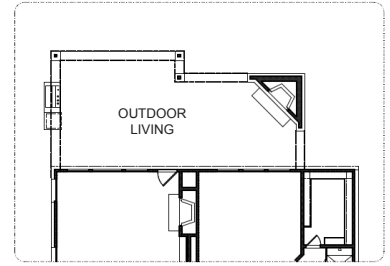
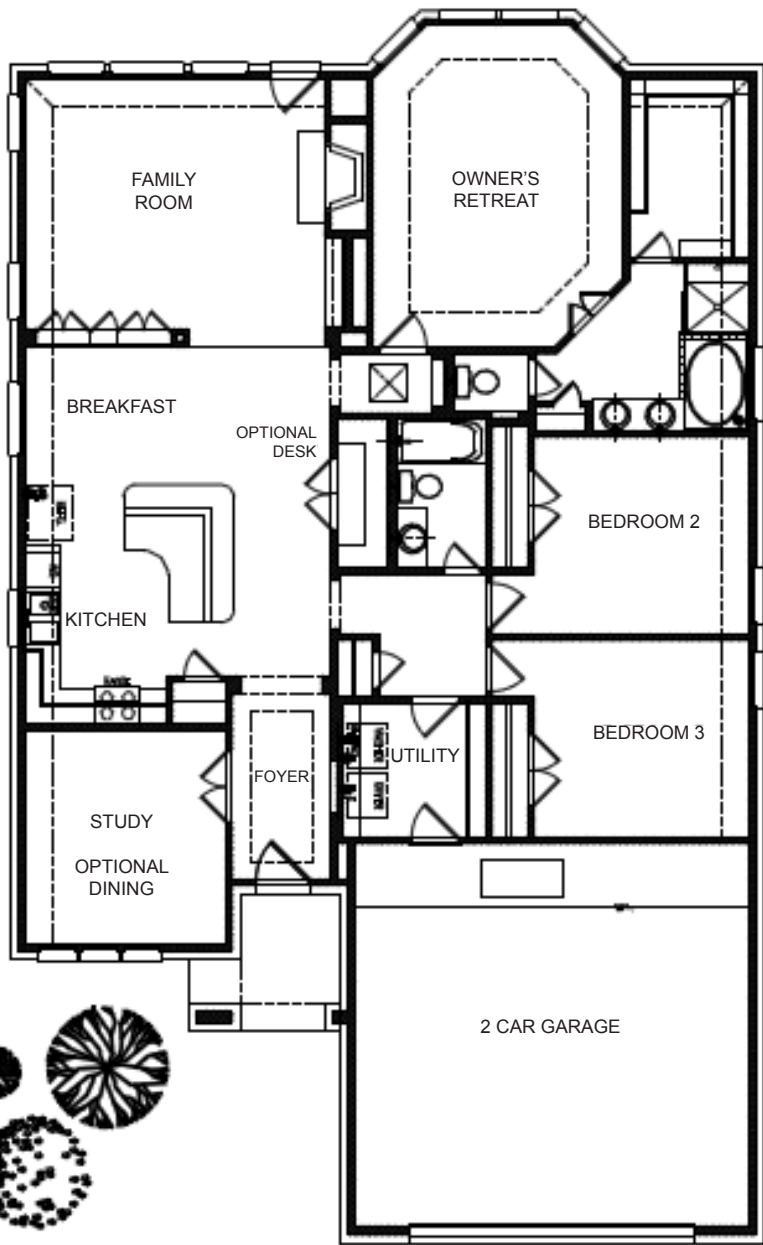


FRONT ELEVATION "B" w/ OPT STONE

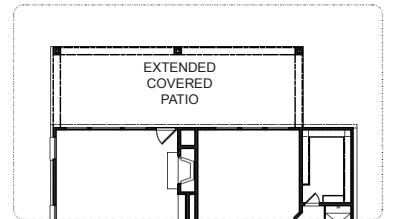


FRONT ELEVATION "B" w/ OPT 3 CAR

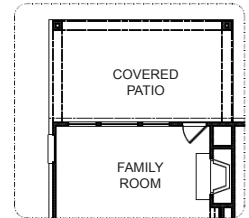
Prices, plans, dimensions, features, specification, materials and availability of homes or communities are subject to change without notice or obligation. Illustrations are artist depictions only and may differ from completed improvements. Not all options available in all communities. All Rights Reserved.



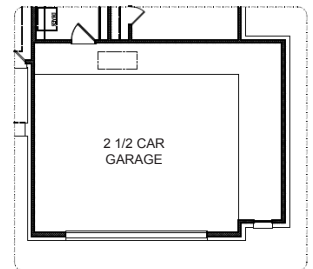
OPTIONAL OUTDOOR LIVING



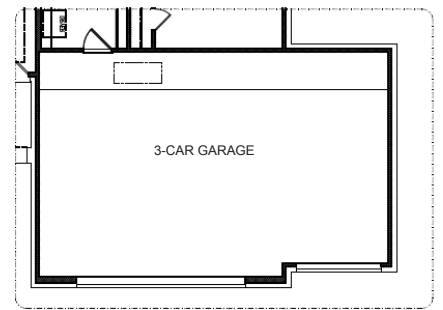
OPTIONAL EXT. COVERED PATIO



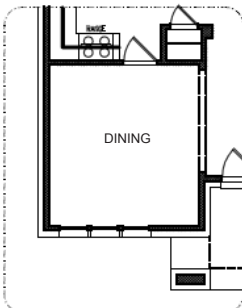
OPTIONAL COVERED PATIO



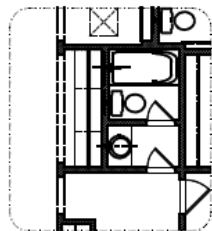
OPTIONAL 2 1/2 GARAGE



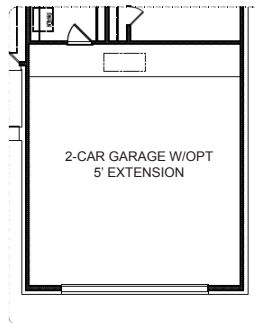
OPTIONAL 3 CAR GARAGE



OPTIONAL DINING



OPTIONAL DESK



OPTIONAL 5' GARAGE EXTENSION

Prices, plans, dimensions, features, specification, materials and availability of homes or communities are subject to change without notice or obligation. Illustrations are artist depictions only and may differ from completed improvements. Not all options available in all communities. All Rights Reserved.